

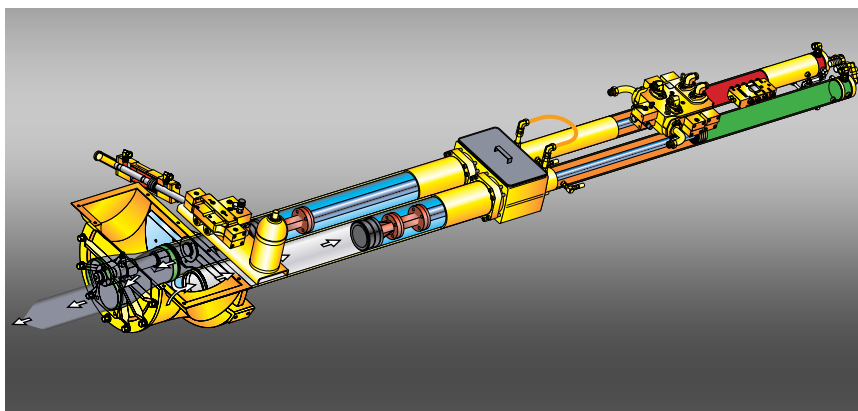
# S 43 SX

Truck-Mounted concrete pump  
with RZ5 placing boom



# THE BEST FEATURES OF TWO BOOMS

Only Schwing combines Roll and Fold™ with a Z boom.

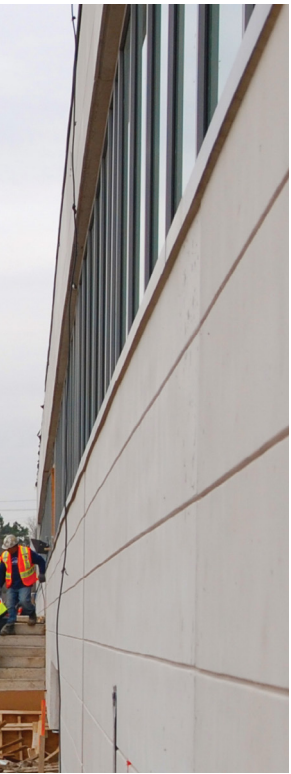


This open loop **Generation 3** all-hydraulic concrete pump sets the standard for fuel-efficiency, reliability and performance. Twin circuit hydraulics combine with the longest stroking pumping cylinders in the industry for a smooth, continuous flow of concrete which also translates to longer boom life. **Big Rock Valve** is designed to pump the harshest mixes and provide the lowest per yard operating costs.



Patented **Vector Controls** allow two-way communication between pump and operator. Critical real-time operating data is displayed at the remote box and stored in the controller for easy retrieval.





Operators have unprecedented boom maneuverability with the only concrete pump that combines the best features of Roll and Fold™ and Z booms. The S 43 SX utilizes the exclusive RZ boom with five section versatility, Super 2000 twin wall five-inch (125 mm) pipeline and 918-degrees of total articulation with the 270-degree Z-fold at the tip section. Operators can use this versatile boom to reach to 138' 6" vertically and 124' 11" horizontally.

With Schwing's exclusive Super X Outriggers® set-up is fast providing a compact and stable platform for pumping. The curved front outriggers telescope out and around obstacles without extending past the truck's front bumper allowing placement of the pump as close to the pour area as possible. The S 43 SX only requires a 27' 3" outrigger spread (same front and rear) for exceptional stability.

The Generation 3 concrete pump is the low-maintenance, 213 cubic yard per hour, long-lasting, high performance 2525-6 unit that provides long slow-stroking action. The all-hydraulic design utilizes the Schwing Big Rock Valve with standard Auto-greaser, promoting maximum filling efficiency of the material cylinders even with harsh mixes. Schwing's open circuit design provides continuous hydraulic oil flow for fuel efficiency, superior filtration and better cooling.

Only one concrete pump has ever been awarded the Top 100 Innovative Product by CONSTRUCTION EQUIPMENT MAGAZINE – The S 43 SX from Schwing.



*Only Schwing puts the Z where it counts – at the tip. The S 43 SX five-section boom has a 270-degree **tip section** that combined with 918-degrees of overall articulation provides unprecedented boom versatility.*



**Super X outriggers** are a Schwing exclusive providing maximum stability with the smallest footprint. These telescopic, single-stage outriggers set-up fast and don't extend in front of the cab for maximum horizontal boom reach.

# SPECIFICATIONS

## Pump Kit on S 43 SX

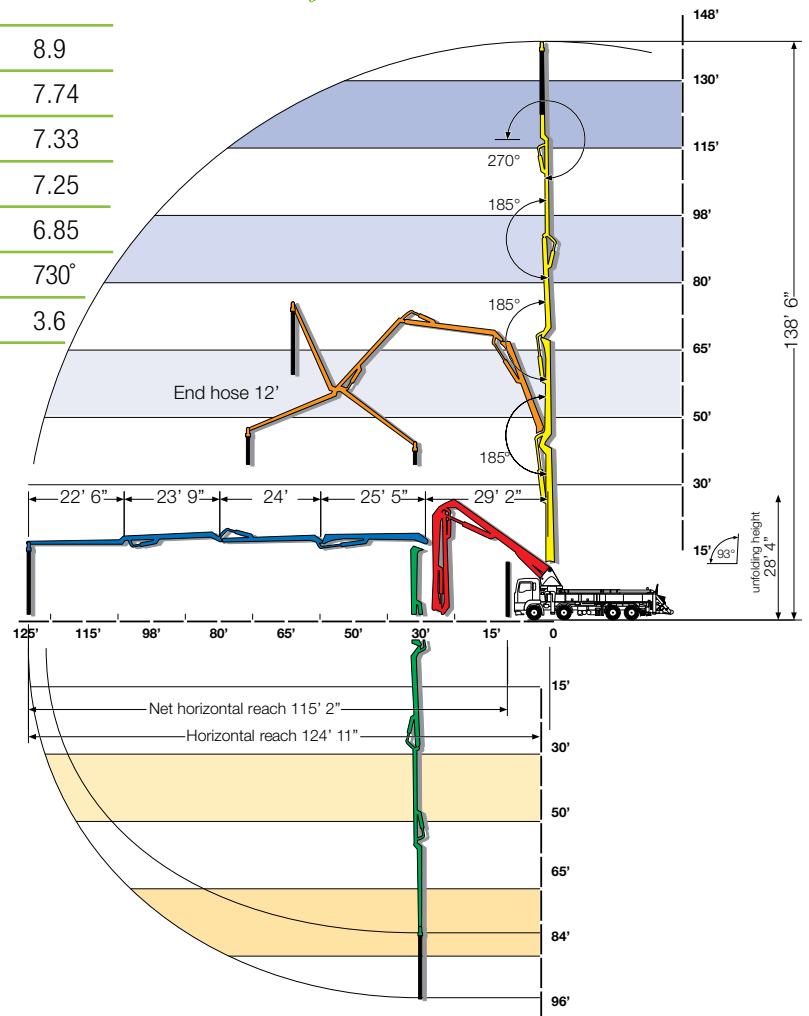
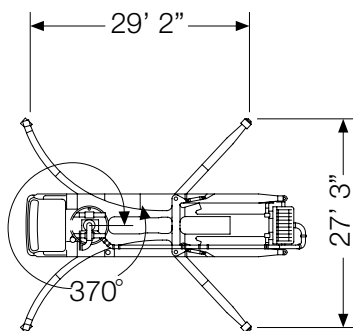
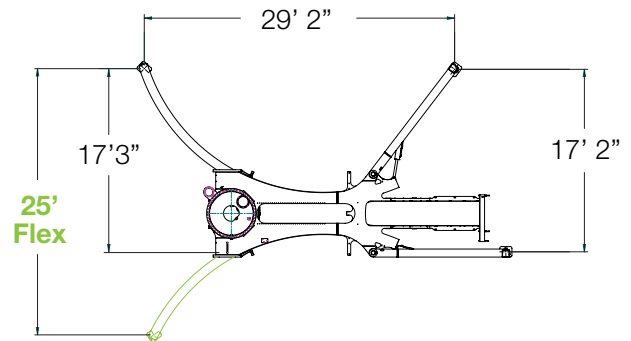
	2525H-6 120/85 MPS	
	U.S.	Metric
Theor. Concrete Output Per Hour (cubic yards - cubic meters)	213	163
Maximum Pressure on Concrete (psi - bar)	1169	80
Maximum Strokes Per Minute	22	
Maximum Aggregate Size (in. - mm)	2.5	63.5
Material Cylinder Diameter (in. - mm)	10	254
Material Cylinder Stroke Length (in. - mm)	98	2500
Differential Cylinder Diameter (in. - mm)	4.7	120

## Boom Specifications

	U.S.	Metric
Pipeline Diameter (in. - mm)	5	125
Vertical Reach (ft.-in. - m)	138-6	42.3
Horizontal Reach (ft. - m)	124-11	38.1
Net Horizontal Reach (ft. - m)	115-2	35.1
Unfolding Height (ft. - m)	28-4	8.5
Section Lengths		
First Section (ft.-in. - m)	29-2	8.9
Second Section (ft.-in. - m)	25-5	7.74
Third Section (ft. - m)	24	7.33
Fourth Section (ft. - m)	23-9	7.25
Fifth Section (ft. - m)	22-6	6.85
Slewing Range (degrees)	730°	730°
End hose length (ft.-in. - m)	12	3.6

Specifications are subject to change without prior notice.

## EASy One Sided Outrigging System



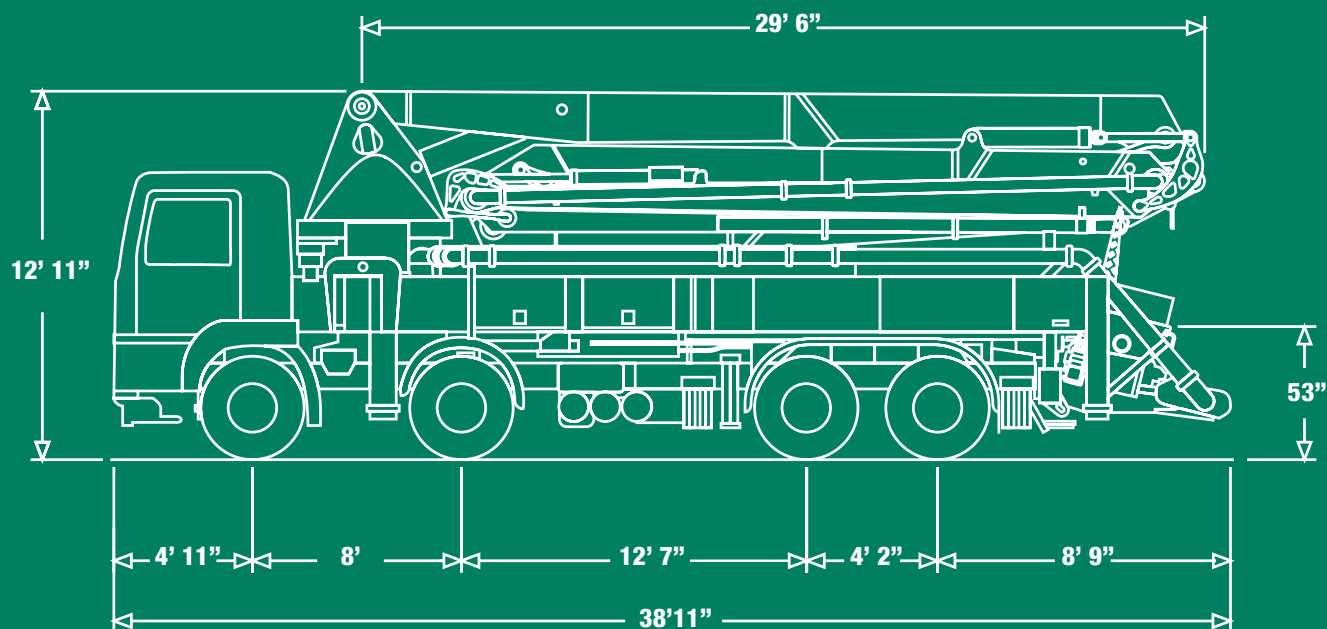
Only one manufacturer can supply the Schwing experience.

Thousands of our customers form a backdrop of success that you can join by letting us spec the right piece of equipment for your needs. And a select group of knowledgeable dealers provides another layer of invaluable experience. You and your staff will be welcomed into our dedicated training facility to learn how to extract the maximum profitability from your Schwing. And your investment is backed by the exclusive Green Shield warranty that can be extended to an industry-leading three years.



*More than 400,000 square feet are devoted to producing the highest quality concrete equipment at our [White Bear, Minnesota](#) plant. From close inspection of incoming materials to forming our products with the latest robotic welding techniques, Schwing takes craftsmanship to the highest standards. Our state-of-the-art paint facility produces finished products you will be proud to put your name on. In addition, a vast inventory of parts are on hand to keep your Schwing product running at maximum efficiency. Please schedule a visit to this modern facility located minutes north of Minneapolis/St. Paul to see our long-term commitment to the market.*





## SCHWING-STETTER MOVES CONCRETE. **WORLDWIDE.**

Wherever concrete is produced and moved is where you will find Schwing-Stetter machinery.

With plants in Germany, Austria, USA, Brazil, Russia, China and India as well as with more than 100 sales and service facilities, the group of companies is always close to the customer.

Our wide range of products with something for every application is what makes Schwing-Stetter the No. 1 system supplier for concrete machinery worldwide.



**CONCRETE  
BATCHING PLANTS**



**TRUCK  
MIXERS**



**TRUCK-MOUNTED  
CONCRETE PUMPS**



**STATIONARY  
CONCRETE PUMPS**



**SEPARATE  
PLACING BOOMS**



**CONCRETE  
RECYCLERS**

